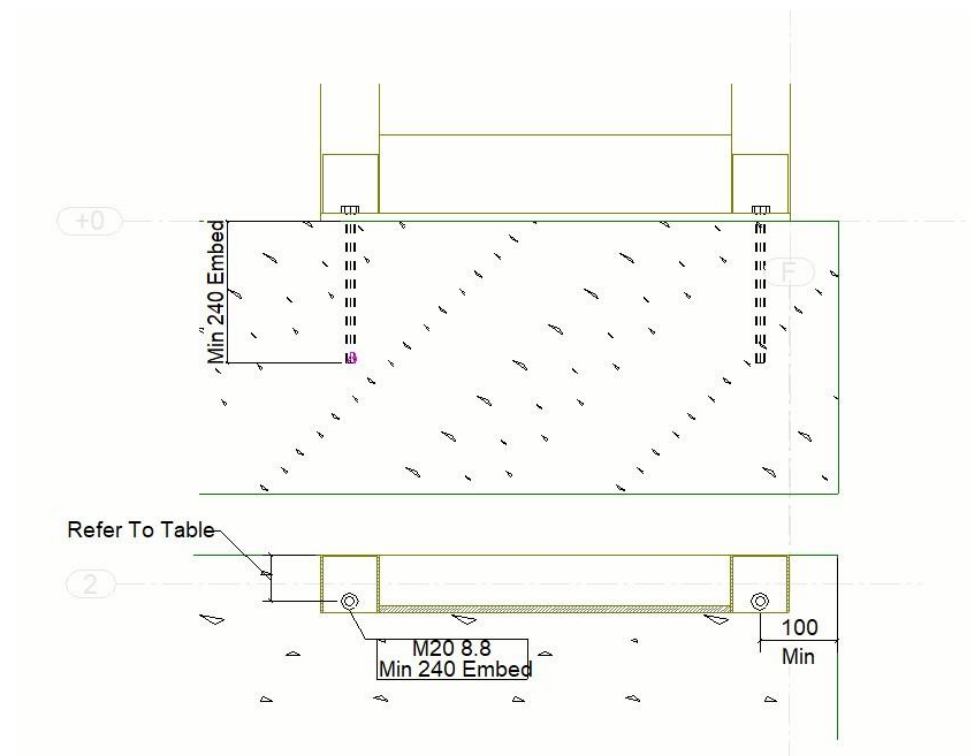


AJ Brace

Installation Instructions:

- Mark hole positions – Minimum 60 or 75mm from edge and 100mm from the returning edge as per the Diagram. In order to Achieve Compliance, the Installer shall refer to the AJ Brace capacity table to determine the edge clearance required.
- Drill 2x Ø22mm hole to 240mm minimum depth.
- Remove dust - Chemset M20 Grade 8.8 threaded rod and allow to set before tightening. (Refer Ramset Reo502 PLUS installation guide).
- In order to Achieve Compliance, the Installer shall refer to the AJ Brace capacity table to determine the edge clearance required.
- Fix the top of the AJ Brace to the top plate in accordance with good building Practices unless specified otherwise in the site specific Engineering.



AJ Brace Capacity Table

Item #	Brace Height	Brace Width	Lateral Bracing Capacity Based on 60mm edge clearance (70mm Wall Frames)	Load Bearing Capacity Based on 60mm edge clearance (70mm Wall Frames)	Lateral Bracing Capacity Based on 75mm edge clearance (90mm Wall Frames)	Load Bearing Capacity Based on 75mm edge clearance (90mm Wall Frames)
AJ-2400-350	2400	350	6.7KN	100KN	7.5KN	100KN
AJ-2400-450	2400	450	8.9KN	100KN	10KN	100KN
AJ-2400-600	2400	600	12.1KN	100KN	13.6KN	100KN
AJ-2550-350	2550	350	6.3KN	100KN	7.1KN	100KN
AJ-2550-450	2550	450	8.4KN	100KN	9.4KN	100KN
AJ-2550-600	2550	600	11.2KN	100KN	12.8KN	100KN
AJ-2700-350	2700	350	6.0KN	100KN	6.7KN	100KN
AJ-2700-450	2700	450	7.9KN	100KN	8.8KN	100KN
AJ-2700-600	2700	600	10.8KN	100KN	12.1KN	100KN

Note: Lateral Bracing Capacity will only comply if the specified edge clearance is achieved therefore in a 90mm wall, the braces are to be installed flush with the inside of the timber frame (further away from edge of slab).